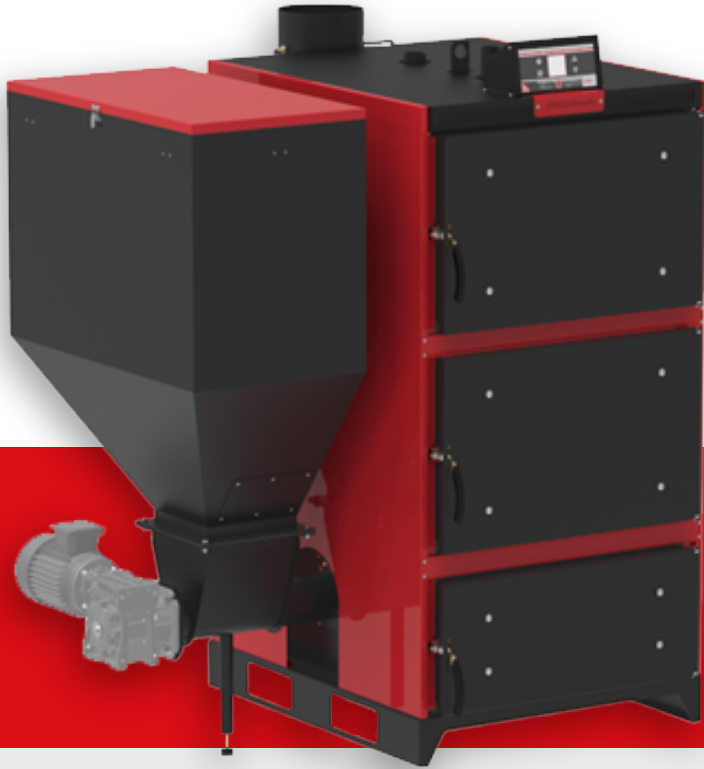


EKY/S PRISMATIC SOLID FUEL BOILER



- Solid Fuel
- Central System
- Manual Feed Optional
- Electronic Control
- Automatic Driver

MODEL: EKY/S PRISMATIC 125 - 500
FUEL TYPE: SOLID FUEL (PELLET)
WORKING PRESSURE (BAR): 3 BAR
CAPACITY (KW): 145 - 581 KW

"These capacities fulfill for the temperature 70/55 °C"

- * TERMODİNAMİK / PELLET three-pass heating boilers produced with superior technology comply with EN 303-5 Standard. The combustion surfaces in the burner are made of stainless steel (chrome), and the burner coupled to the boiler makes all domestic and foreign wood pellets, and the water pipe grids suitable for burning log woods and provides complete combustion.
- * The pellet is designed to burn pellets known as wood pellets on the burner, which can also be used as dual fuel. Block wood can be burned on special pipes of high carbon, which serve as a grill on the burner.
- * It provides healthy burning with automatic fuel loading. Since it loads according to the thermal need, excess fuel in the combustion chamber is prevented.
- * With the automatic ignition function, boiler operation is provided with a single click from the control panel.
- * Thanks to the fuel sensor, it is provided to inform the fuel tank that the fuel is over.
- * It has a compact structure with its prismatic body, making it easy to be mounted in narrow spaces.
- * Thanks to its three-pass structure, it increases the surface of transferring heat energy from smoke to water and reduces emissions.
- * It provides convenience in cleaning and chimney draft with its water jacketed-buffer structure.
- * It provides more precise thermostat control with its digital control panel. It allows intervention to loading settings according to fuel quality, and sends the most appropriate amount of fuel to the combustion chamber. When it reaches the set temperature, it stops the fuel supply and the fan, and when the temperature drops, it activates these parts again and continues the heating from where it left off.
- * It provides the opportunity to monitor the flue temperature from the control panel.
- * Thanks to the fan, it reaches the set temperature faster and provides combustion optimization.
- * With the option of connecting the room thermostat, the comfort of adjusting the boiler water temperature remotely is provided.
- * Thanks to the heat insulated body, keeping the temperature emitted from the boiler surface inside saves fuel.
- * If the outside temperature is high, the boiler can be closed from the control panel. In this case, the burning of the fan is darkened when the fan shuts down and the burning is delayed. When the need for heat arises again, the boiler is opened from the control panel and continues to burn without the need for ignition and reaches the desired temperature in a short time (burning delay can be done up to 24 hours depending on the coal quality).
- * Thanks to its automatic stop feature, the control panel detects when the fuel runs out; fan and circulation pump stop automatically. This feature saves energy.
- * Thanks to easy-to-use, large filling, cleaning between slices and ash extraction covers, fuel filling, ignition, ash removal between slices can be done easily.
- * Its elegant appearance and protection against rusting is provided by covering the body plates coated outside of the boiler with electrostatic powder paint. Boiler surfaces are protected with special wet paint.
- * It provides the opportunity to obtain hot water with the addition of water storage tank.



EKY/S PRISMATIC SOLID FUEL BOILER TECHNICAL SPECIFICATIONS

MODEL EKY/S PRISMATIC SOLID FUEL BOILER		130	160	180	200	250	300	350	400	450	500	600	
Fuel Type		WOOD PELLET											
Power	kW	130	160	180	200	250	300	350	400	450	500	600	
	kcal/h	111.800	137.600	154.800	172.000	215.000	258.000	301.000	344.000	387.000	430.000	516.000	
Fire Pot Dimensions	mm	430x410					600x600						
Fuel Capacity	kg	200					280					330	
Water Volume	lt	320	400	480	560	640	890	925	1240	1195	1505	1570	
Boiler Weight	kg	805	920	1080	1155	1300	1755	1900	2130	2200	2505	2750	
Necessary Draft	Pa	30-35	35-45		35-50		40-50				50-60		
Temp. Control Range	°C	40 - 80											
Installation Return Temp.	°C	40											
Max. Operating Pressure	bar	3											
Test Pressure	bar	5											
Dimensions	Total Width (a)	mm	1460		1560		1660	1940	1990	2200			
	Depth (b)	mm	1615	1815		1915		2280	2400		2750		
	Body Width (c)	mm	760		860		960	1130	1180	1390			
	Flue Con n. Height (d)	mm	1615	1815		1915		1465	1600	1665		1675	
	Auger Disassembly	mm	1100					1200		1300			
	Total Height	mm	1640					2000	2055	2095		2125	
Flue Connection Diameter	mm	220					300					350	
Min-Max Flue Temperature	°C	170-210											
Boiler Flow/Return	R"	2"			2 1/2"		DN80		DN100		DN125		
Safety Flow/Return	R"	1 1/2"						2"					
Filling Discharging	R"	3/4"											
Electrical Connection	V/Hz	230V - 50 Hz					400V - 50 Hz						

* The right to make changes in dimension is reserved.

* These capacities fulfill for the temperature 70/55 °C